

FOR SALE

INDUSTRIAL ZONED
WAREHOUSE PROPERTY
1501 Holly Road, Corpus Christi, TX 78417



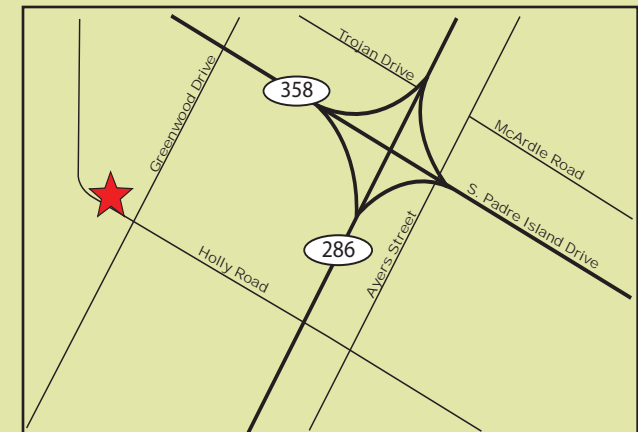
Size: Approximately 3.55 acres (154,638 SF) of vacant land. Building is 16,000 SF which includes a 2,000 SF office.

Zoning: I-2

Sale Price: \$810,000.00

Legal Description: LOS ENCINOS INDUSTRIAL SITES, LOT 2, BLOCK 1

Comments: Owner is selling a building that is approximately 16,000 SF along with adjacent vacant lot. The lot includes approx. 385' of frontage on Holly and totals approximately 3.55 acres (154,638 SF). Zoned I-2. The warehouse includes a loading dock and is fully air conditioned with roughly 2,000 SF office. Excellent access to SPID.



Joe Adame & Associates, Inc.
FULL SERVICE COMMERCIAL & INDUSTRIAL REAL ESTATE

www.joadame.com

For more information please contact:

Mark Adame, SIOR, CCIM
361-880-5888
mark@joeadame.com

Full Service Commercial and Industrial Real Estate

◆ Land ◆ Retail ◆ Industrial ◆ Investment ◆ Office

The information contained herein has been obtained from sources we deem reliable. We have no reason to doubt its accuracy, but we do not guarantee it.

FOR SALE

1501 Holly Road, Corpus Christi, TX 78417



Joe Adame & Associates, Inc.
FULL SERVICE COMMERCIAL & INDUSTRIAL REAL ESTATE

www.joeadame.com

For more information please contact:

Mark Adame, SIOR, CCIM

361-880-5888

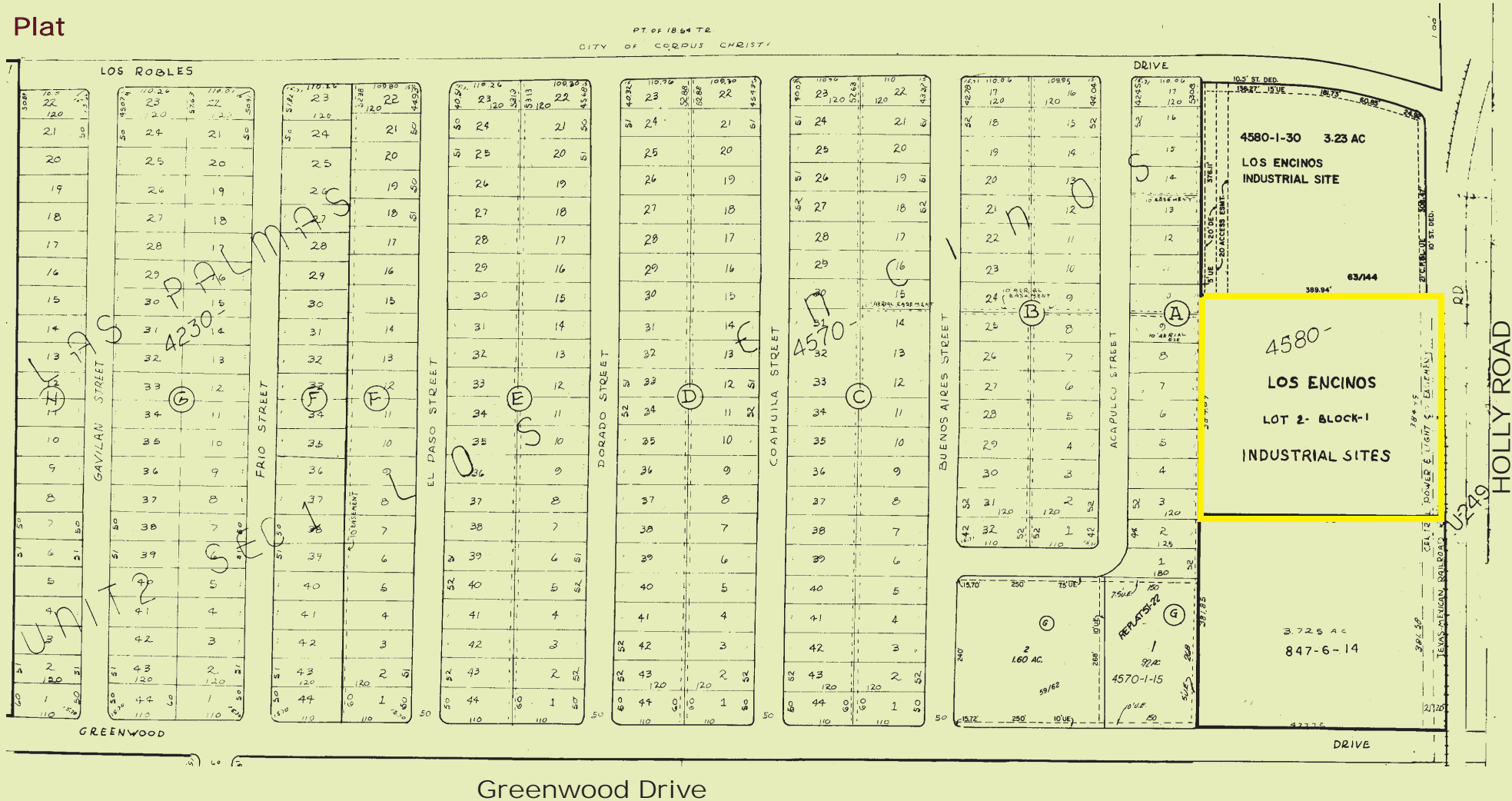
mark@joeadame.com

4550 Corona Drive, Corpus Christi, Texas 78411 Phone: 361-880-5888 Fax: 361-880-5883 www.joeadame.com

FOR SALE

1501 Holly Road, Corpus Christi, TX 78417

Plat



For more information please contact:

Mark Adame, SIOR, CCIM

361-880-5888

mark@joeadame.com



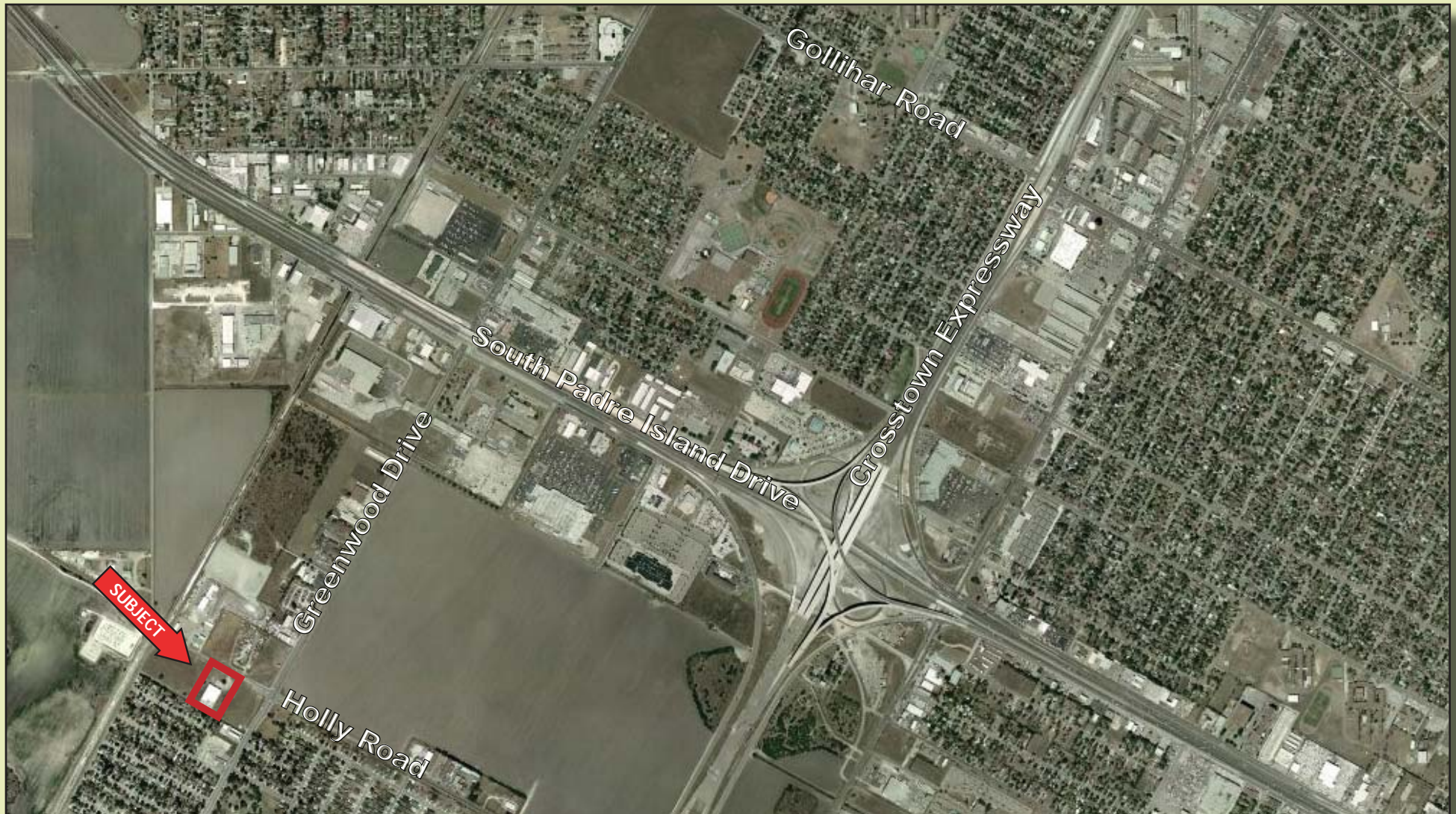
Joe Adame & Associates, Inc.
FULL SERVICE COMMERCIAL & INDUSTRIAL REAL ESTATE

www.joeadame.com

4550 Corona Drive, Corpus Christi, Texas 78411 Phone: 361-880-5888 Fax: 361-880-5883 www.joeadame.com

FOR SALE

1501 Holly Road, Corpus Christi, TX 78417



Joe Adame & Associates, Inc.
FULL SERVICE COMMERCIAL & INDUSTRIAL REAL ESTATE

www.joeadame.com

For more information please contact:

Mark Adame, SIOR, CCIM

361-880-5888

mark@joeadame.com

4550 Corona Drive, Corpus Christi, Texas 78411 Phone: 361-880-5888 Fax: 361-880-5883 www.joeadame.com